

PROJECT 3: TROPICAL WILDLIFE DISCOVERY UNIT



## ARCHITECTURAL DESIGN II

# ARBIETSHAUS

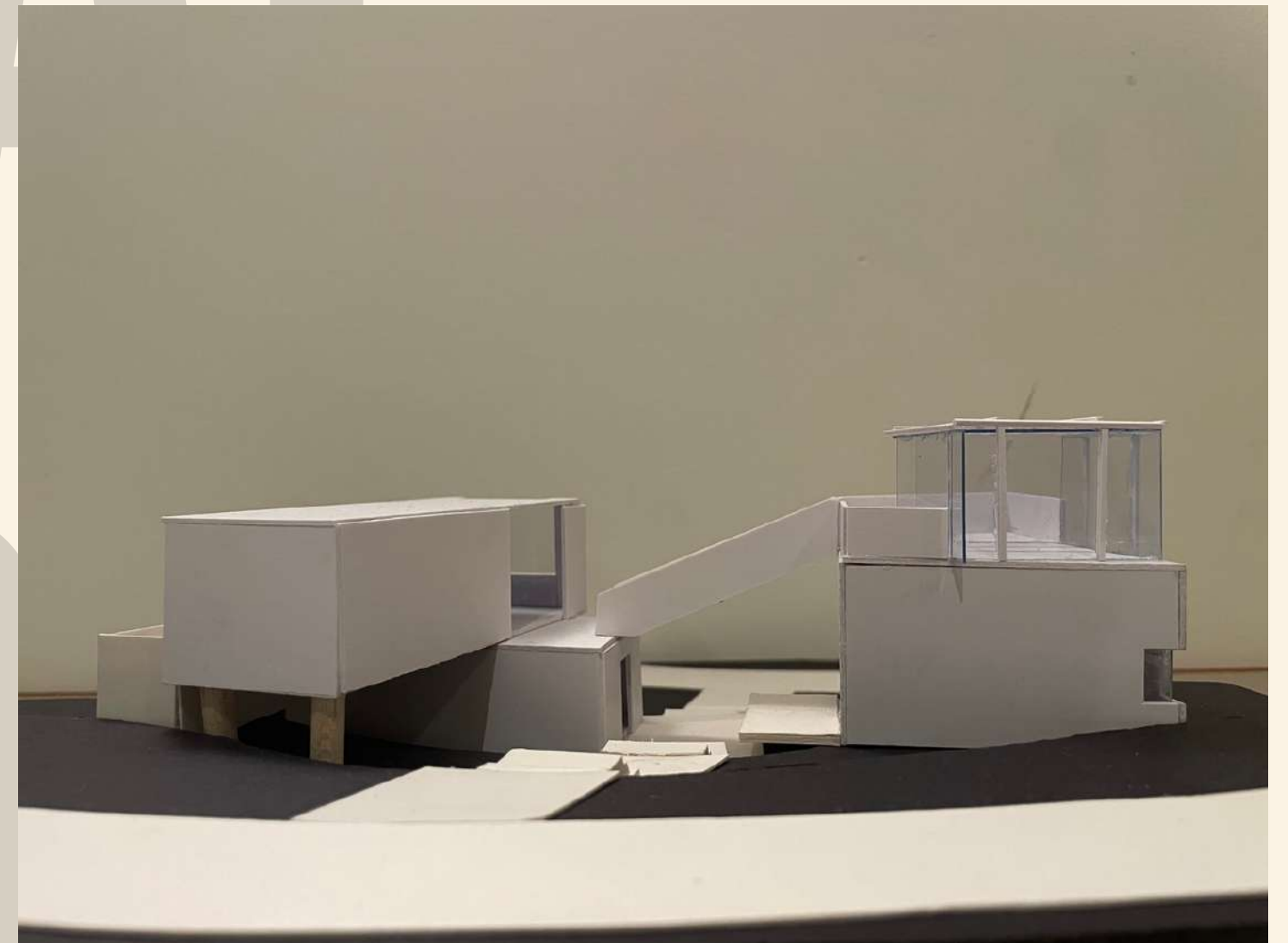
NIKHIL ISAAC SELVANANDAM

0349343

MS ALIA AHAMAD



**FRONT VIEW - SOUTH ELEVATION**



**BACK VIEW - NORTH ELEVATION**



**SIDE VIEW - WEST ELEVATION**



**SIDE VIEW - EAST ELEVATION**

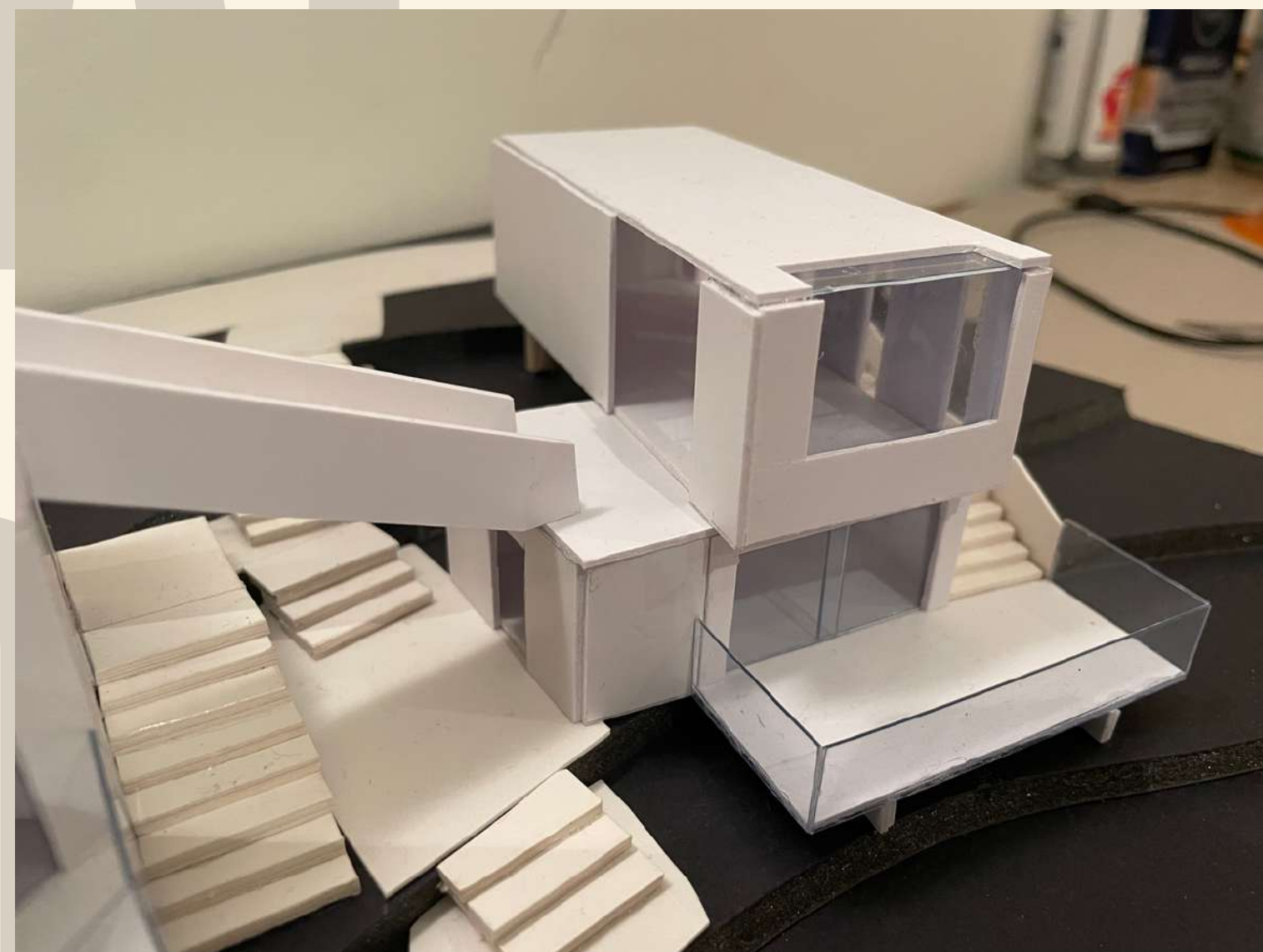


**BIRD'S EYE VIEW**

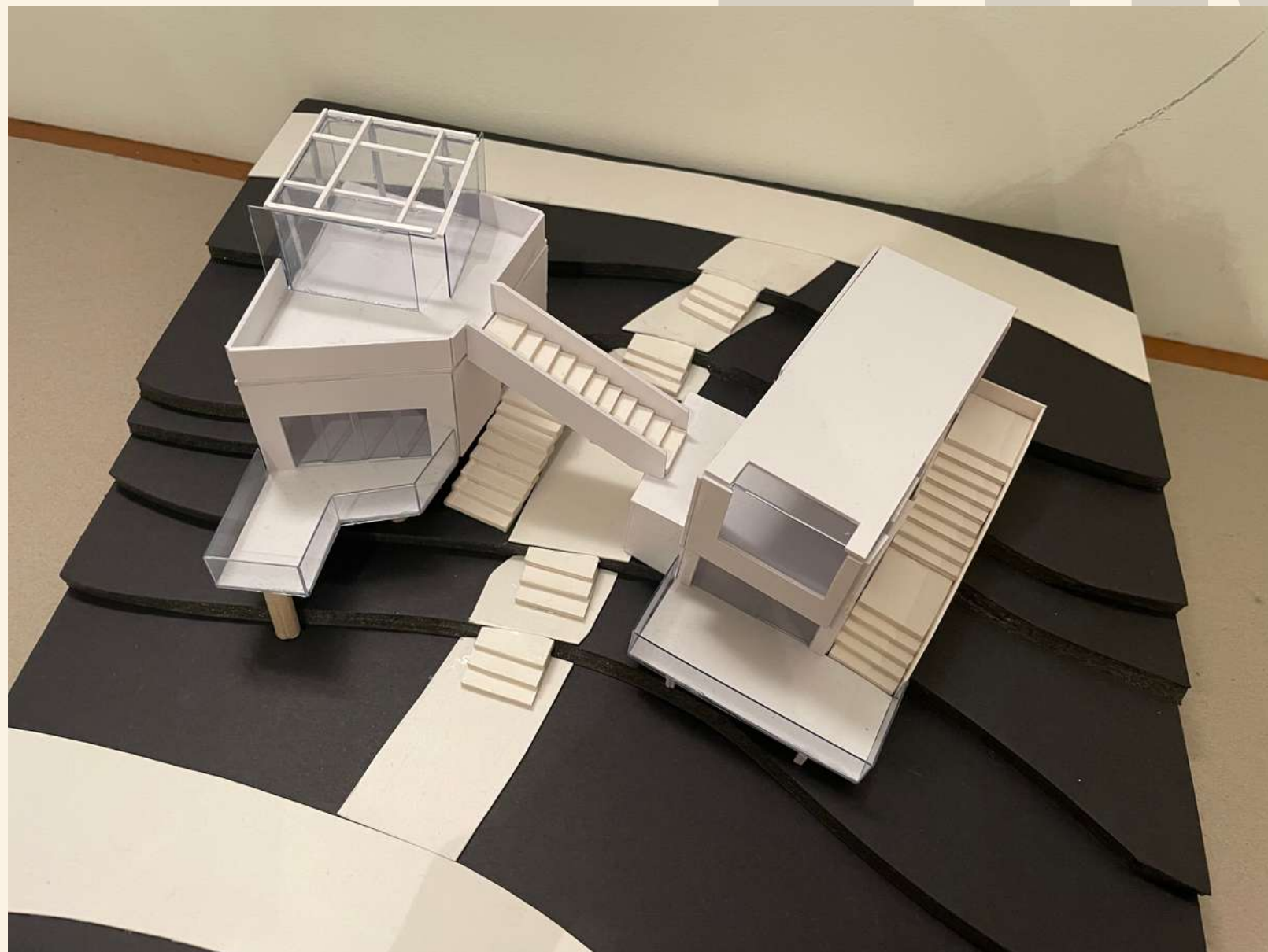




**CLOSE UP VIEW 1**



**CLOSE UP VIEW 2**

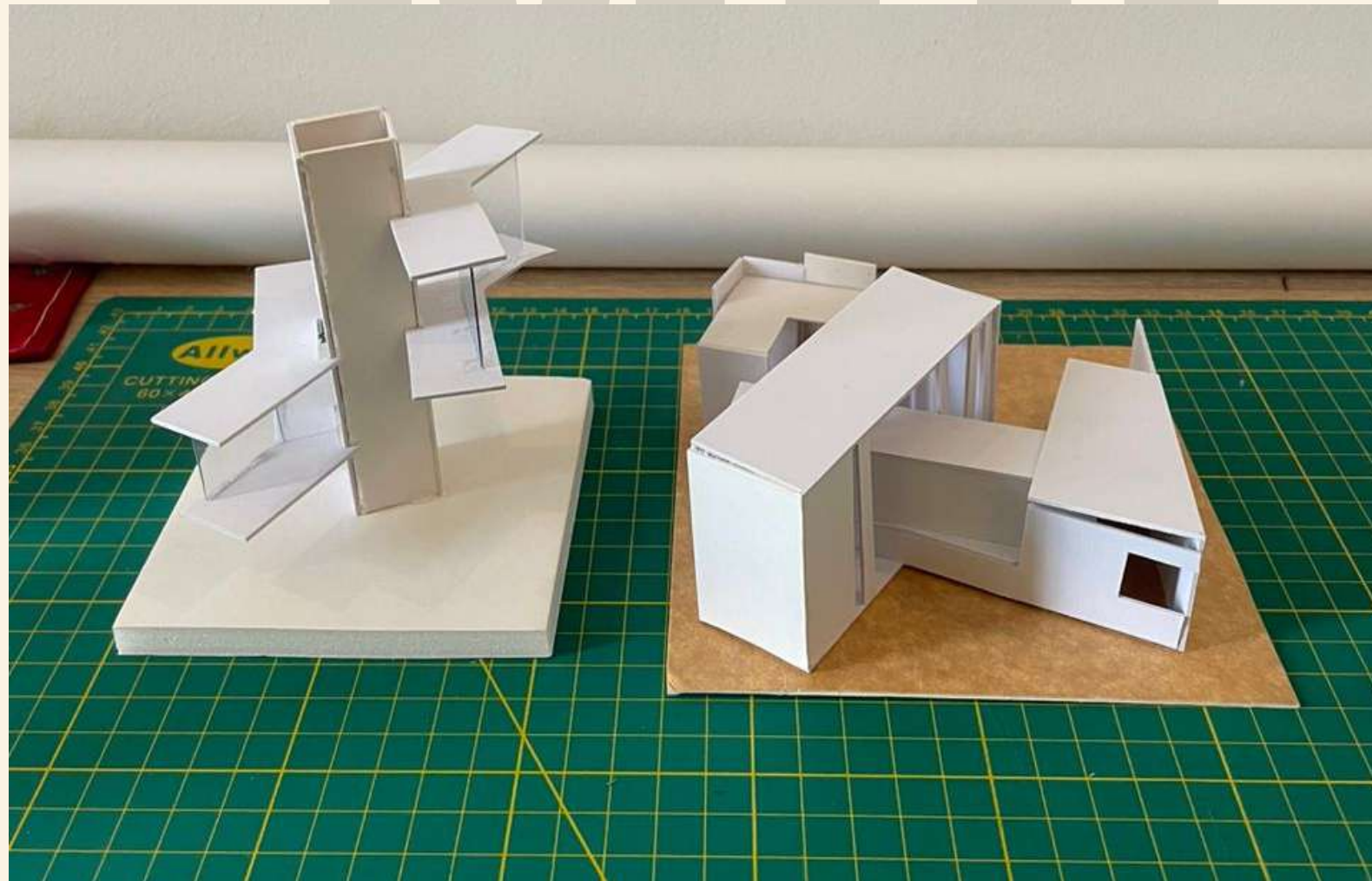


**PERSPECTIVE VIEW 1**

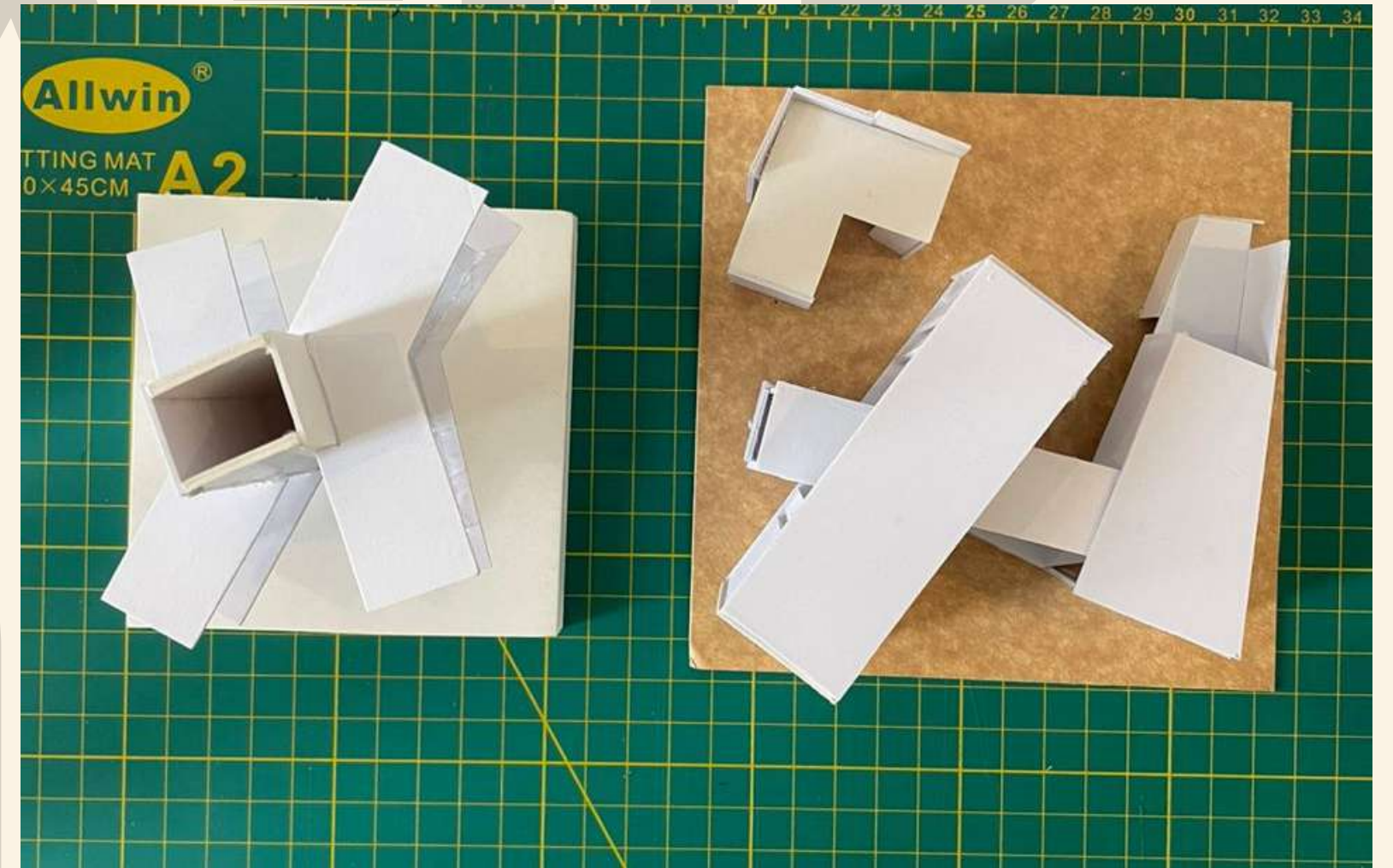


**PERSPECTIVE VIEW 2**



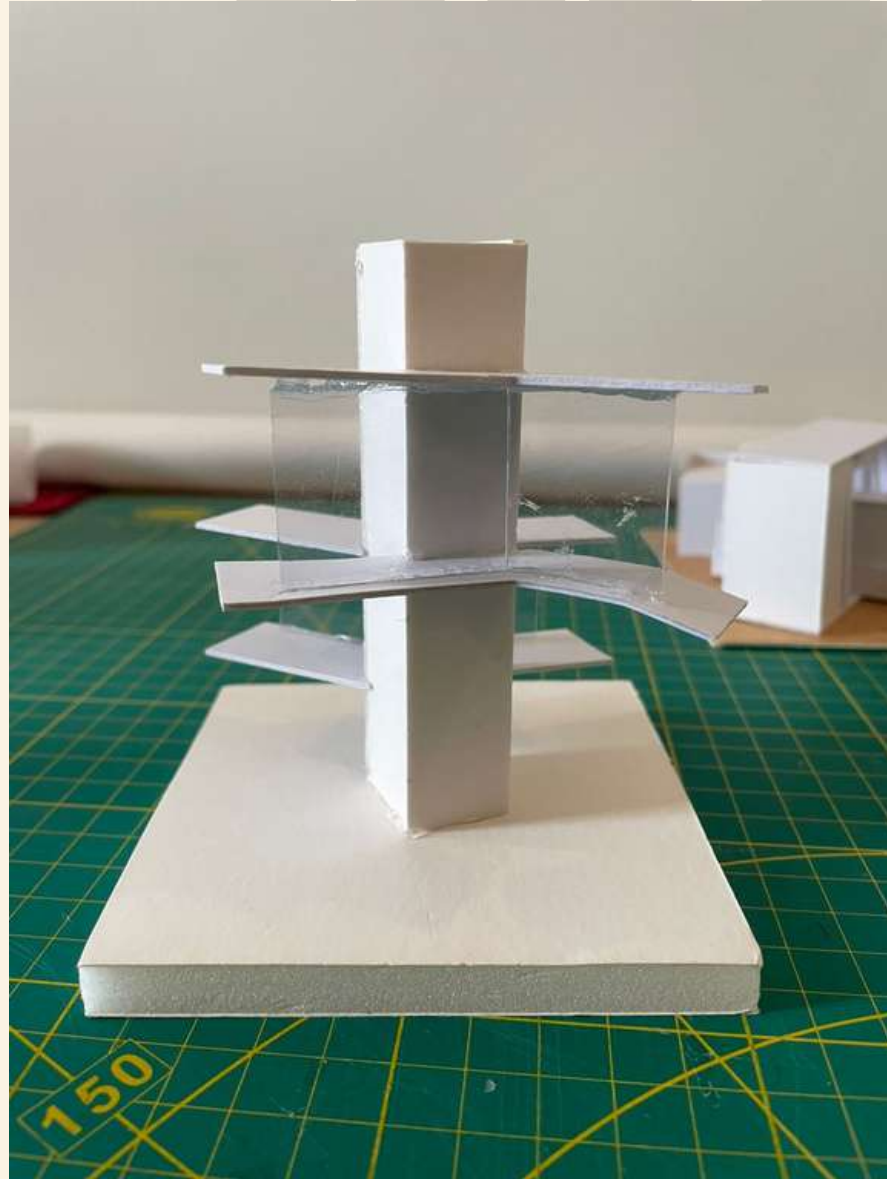


**MOCK-UP MODELS - FRONT VIEW**

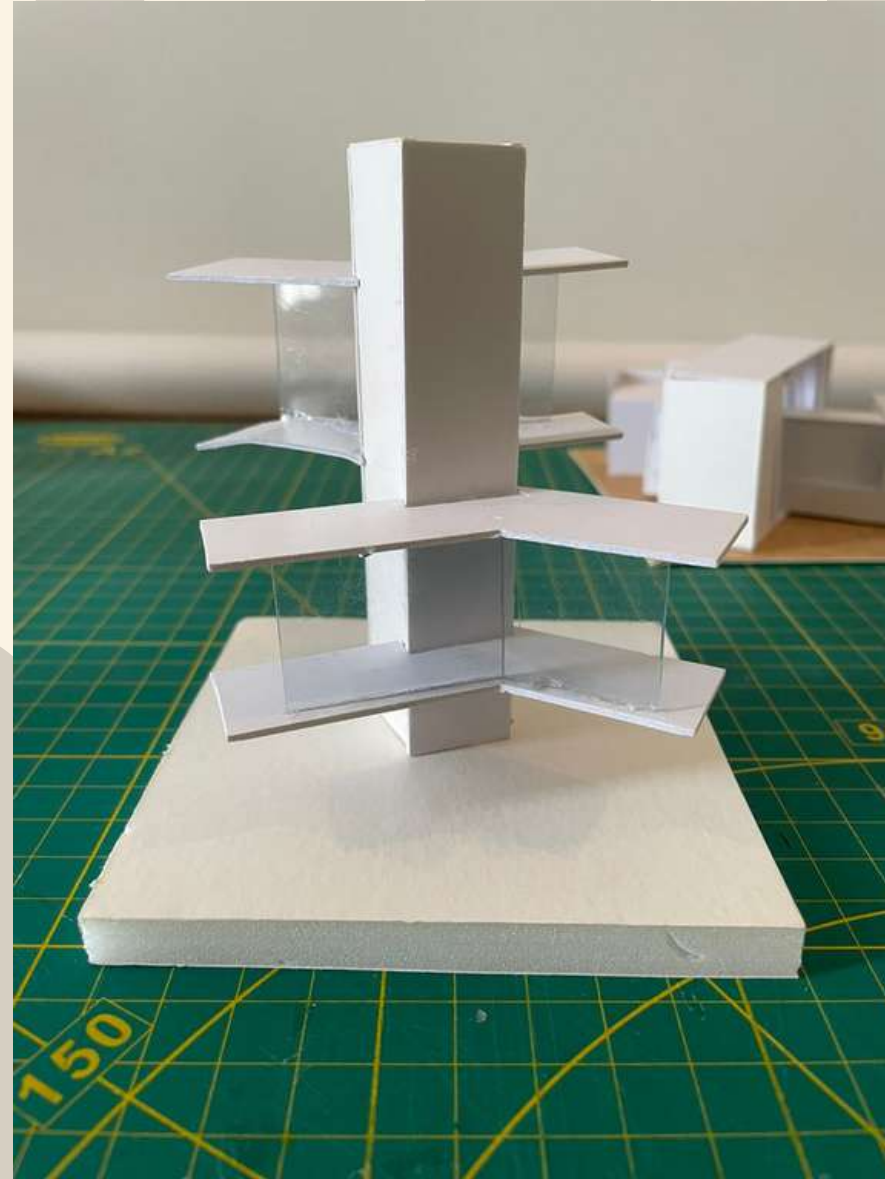


**MOCK-UP MODELS - TOP VIEW**





**FRONT VIEW - NORTH ELEVATION**



**BACK VIEW - SOUTH ELEVATION**

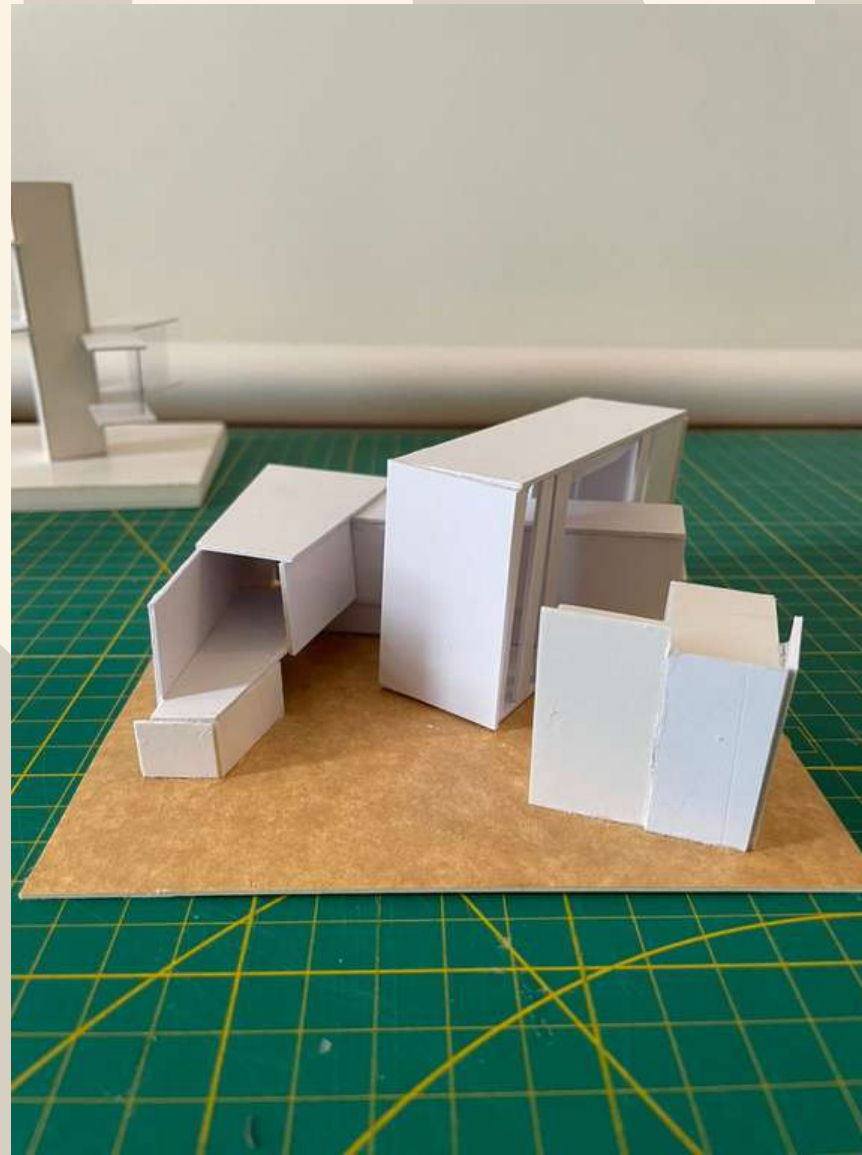


**SIDE VIEW**





**FRONT VIEW - NORTH ELEVATION**

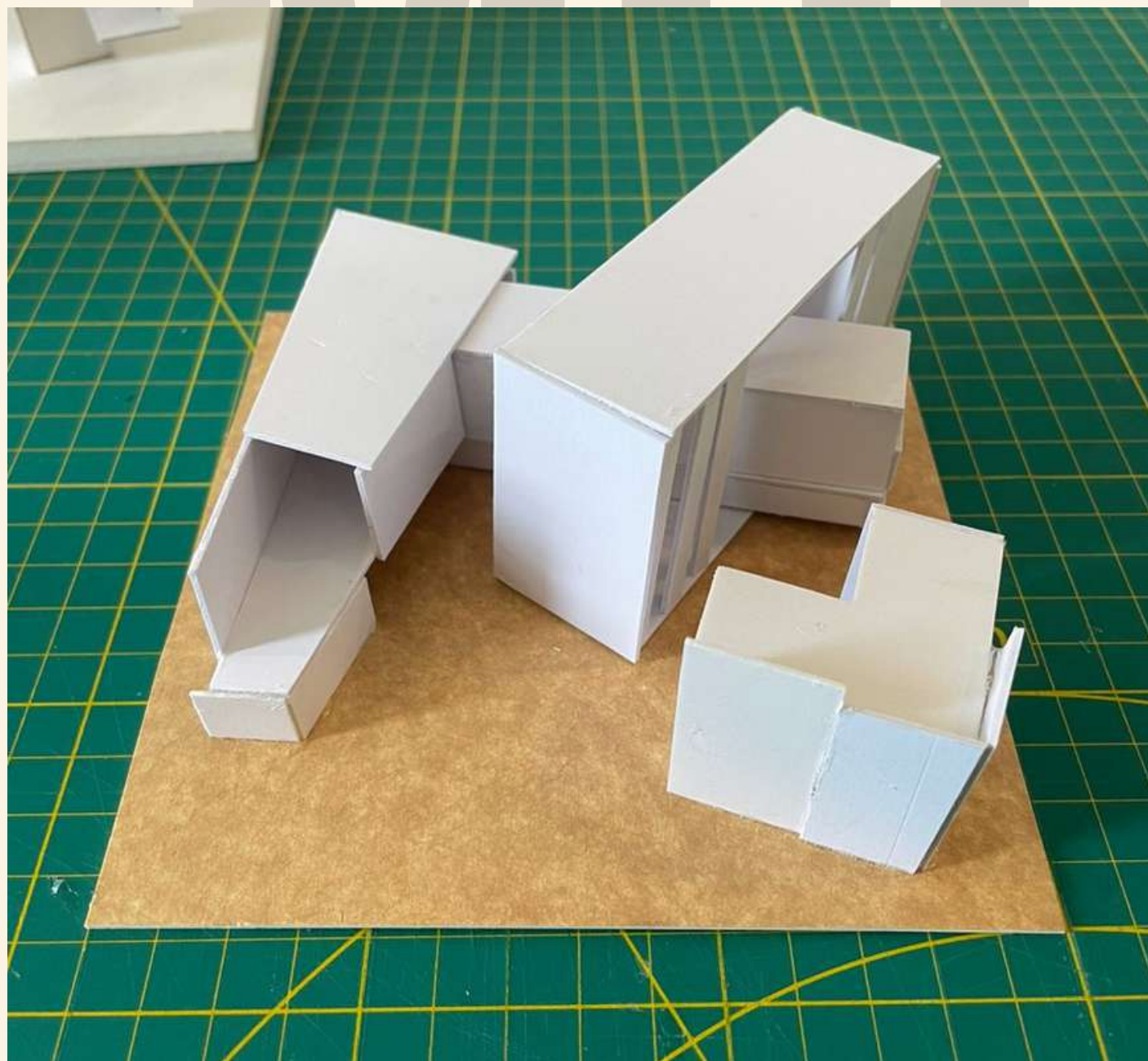


**BACK VIEW - SOUTH ELEVATION**

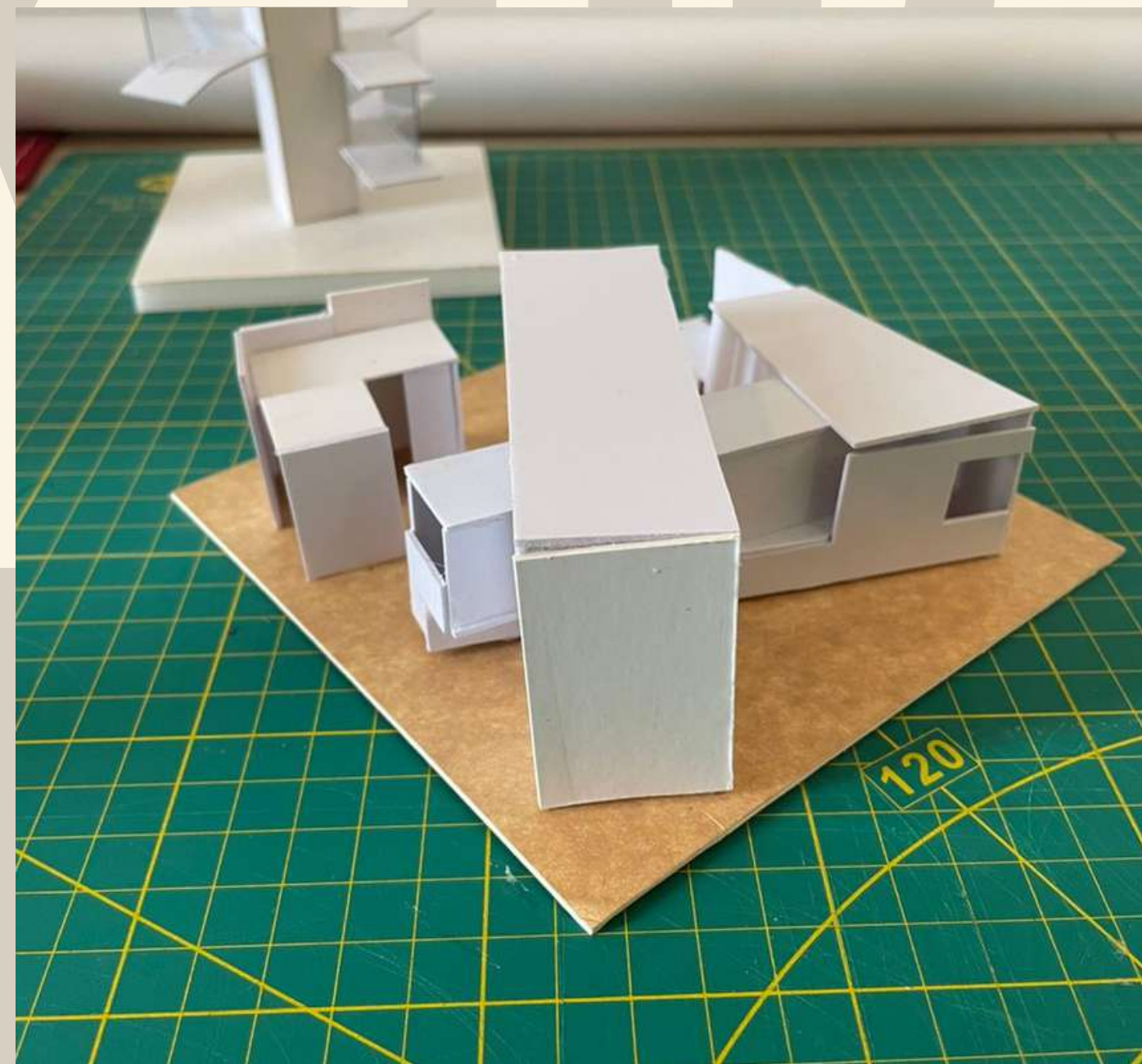


**SIDE VIEW**





**PERSPECTIVE VIEW 1**



**PERSPECTIVE VIEW 2**